

# Regional EU Transition Exposure Dashboards

## Swansea Bay City Region

2020 update





# Swansea Bay City Region. People

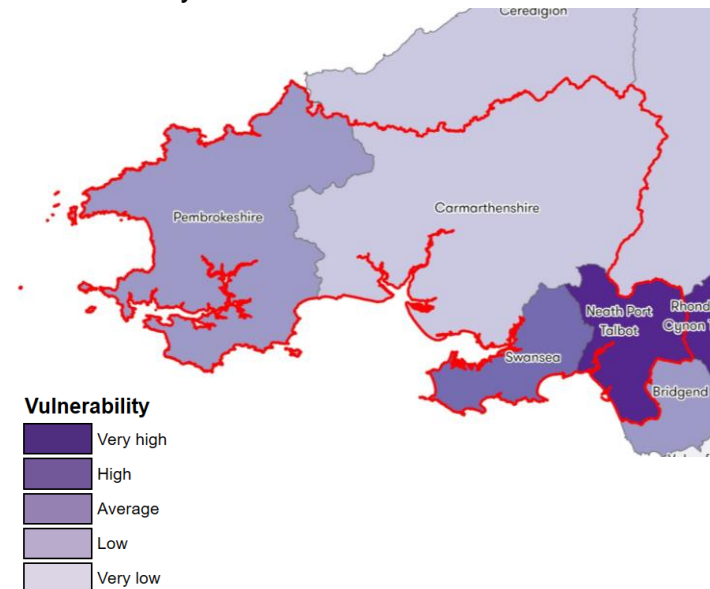
## EU residents – Regional

Proportion of population that are non-UK EU born residents



## Community Vulnerability Index

Vulnerability Index score



## Skills

“Those with fewer formal qualifications, are more likely to be employed in the most exposed industries”

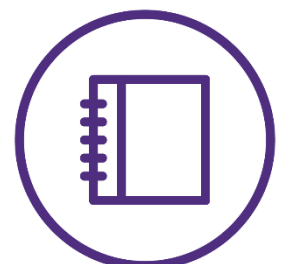
Institute of Fiscal Studies, 2018



No qualifications

9.0%

Wales: 8.5%  
UK: 7.9%



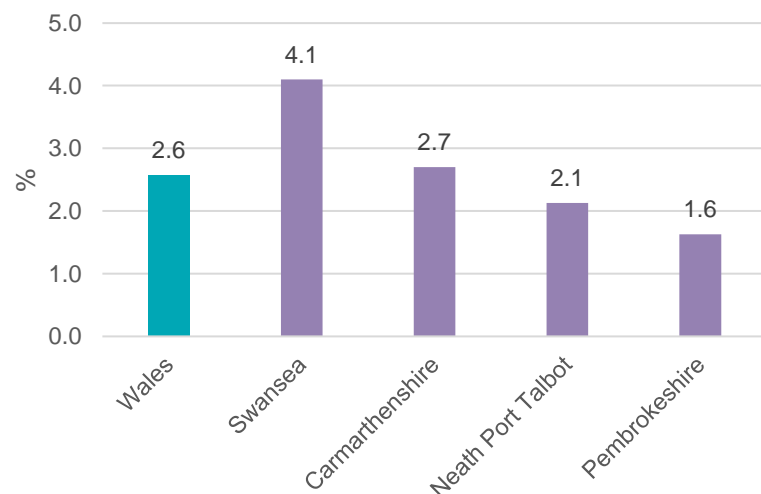
NVQ 1

10.1%

Wales: 11.2%  
UK: 9.9%

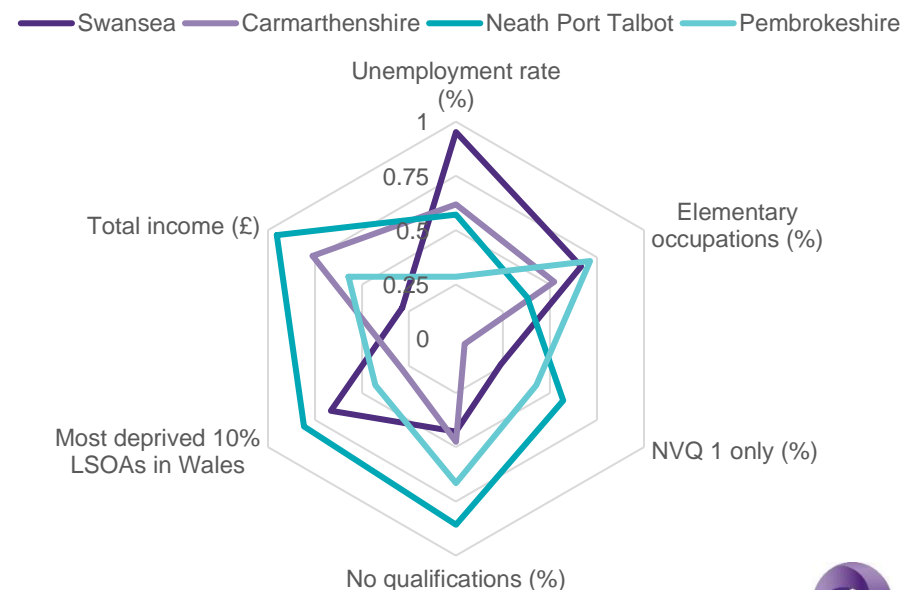
## EU residents – Local authorities

Proportion of population that are non-UK EU born residents



## Community Vulnerability Index Profile

Larger the shape, the higher the vulnerability (0.5 line = National median)



## Top 10 most deprived neighbourhoods

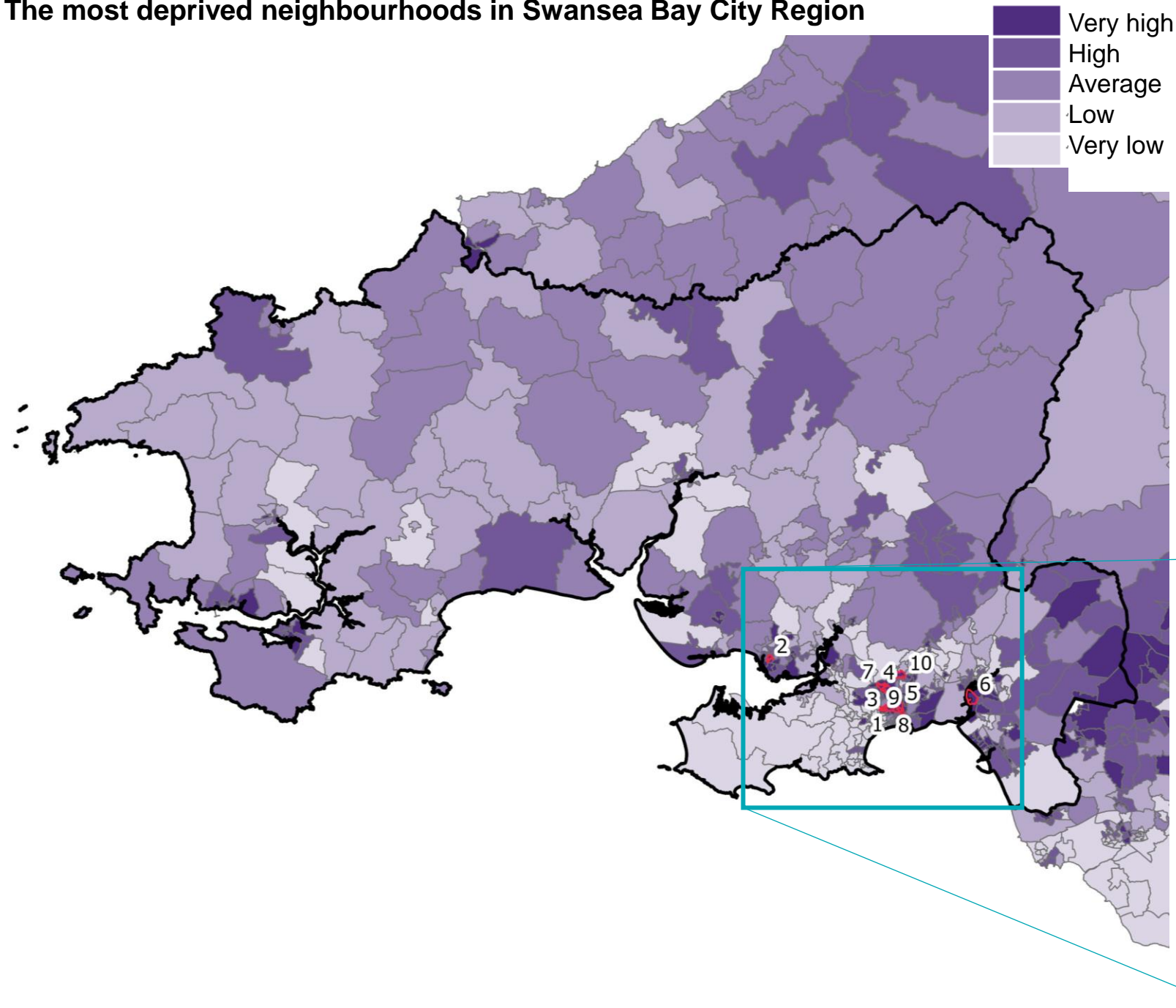
Rank	LSOA name	Local authority	WIMD rank (out of 1,909)
1	Townhill 2	Swansea	16
2	Tyisha 2	Carmarthenshire	17
3	Townhill 1	Swansea	18
4	Penderry 3	Swansea	22
5	Castle 1	Swansea	23
6	Briton Ferry West 1	Neath Port Talbot	25
7	Penderry 1	Swansea	31
8	Townhill 3	Swansea	32
9	Castle 2 North	Swansea	36
10	Mynyddbach 1	Swansea	37





# Swansea Bay City Region. People

## The most deprived neighbourhoods in Swansea Bay City Region



## Top 10 most deprived neighbourhoods

Rank	LSOA name	Local authority	WIMD rank (out of 1,909)
1	Townhill 2	Swansea	16
2	Tyisha 2	Carmarthenshire	17
3	Townhill 1	Swansea	18
4	Penderry 3	Swansea	22
5	Castle 1	Swansea	23
6	Briton Ferry West 1	Neath Port Talbot	25
7	Penderry 1	Swansea	31
8	Townhill 3	Swansea	32
9	Castle 2 North	Swansea	36
10	Mynyddbach 1	Swansea	37

1= most deprived



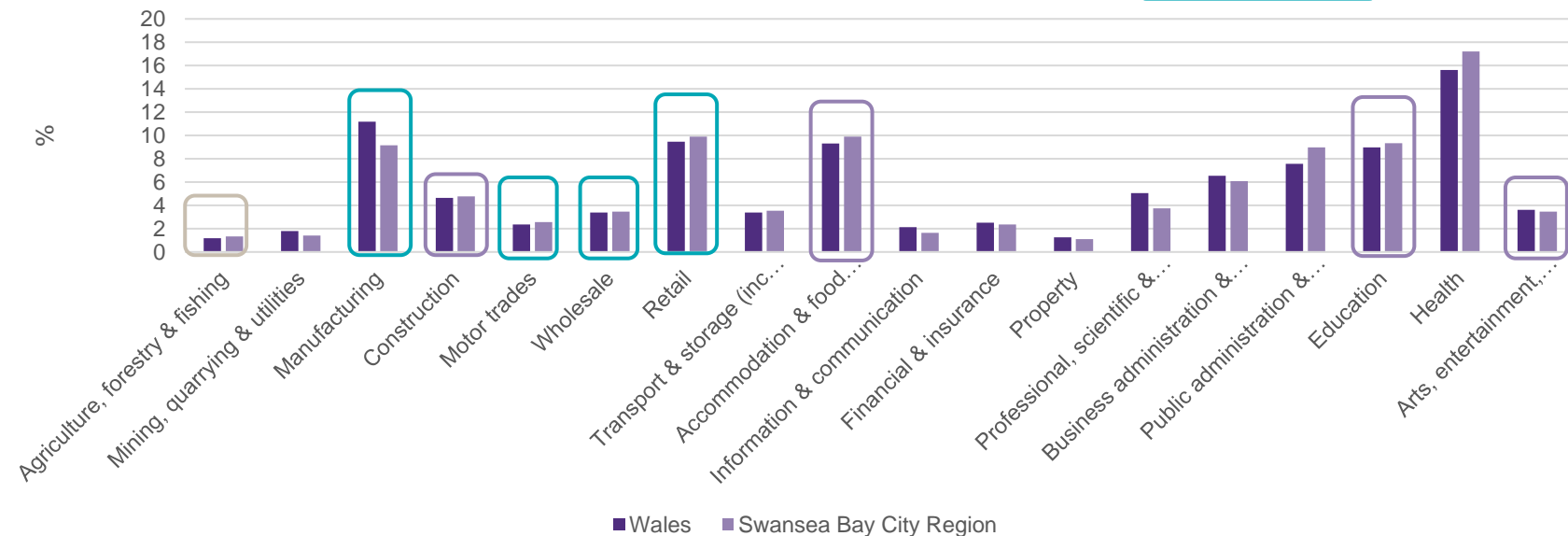
# Swansea Bay City Region. Economy

## Proportion of employment by broad Industrial Sector

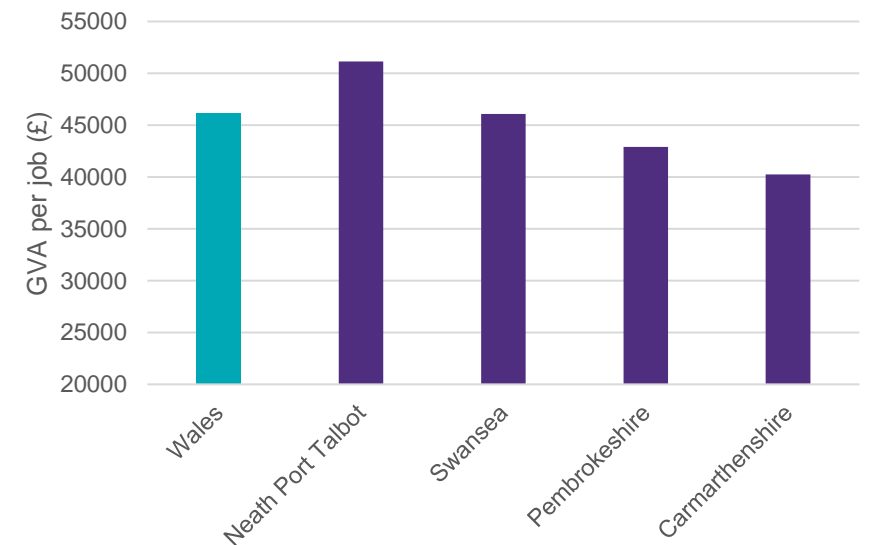
Brexit 'at risk'

COVID-19 'at risk'

Brexit & COVID-19 'at risk'

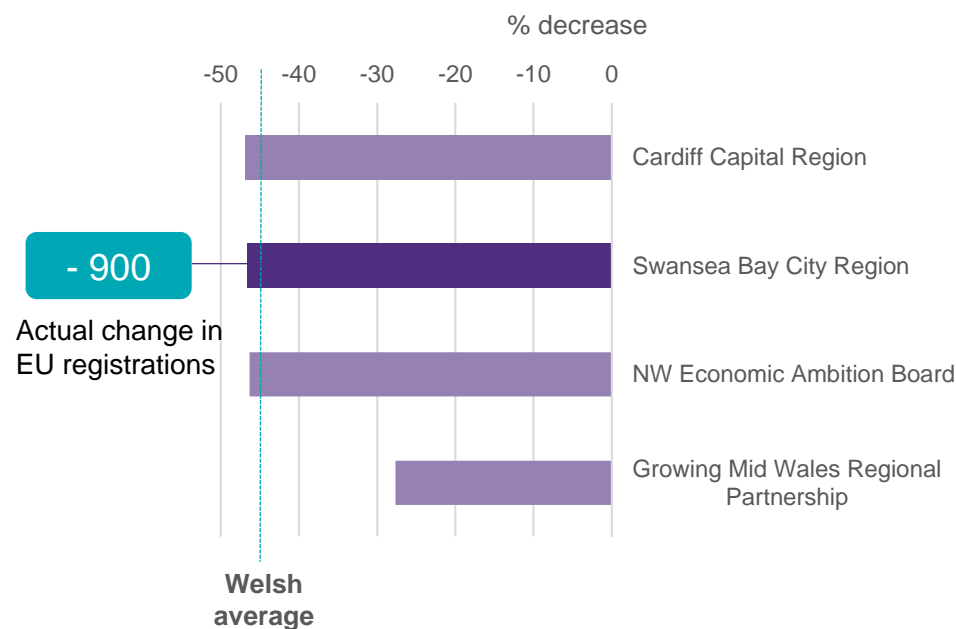


## Gross Value Added per job – Local authorities



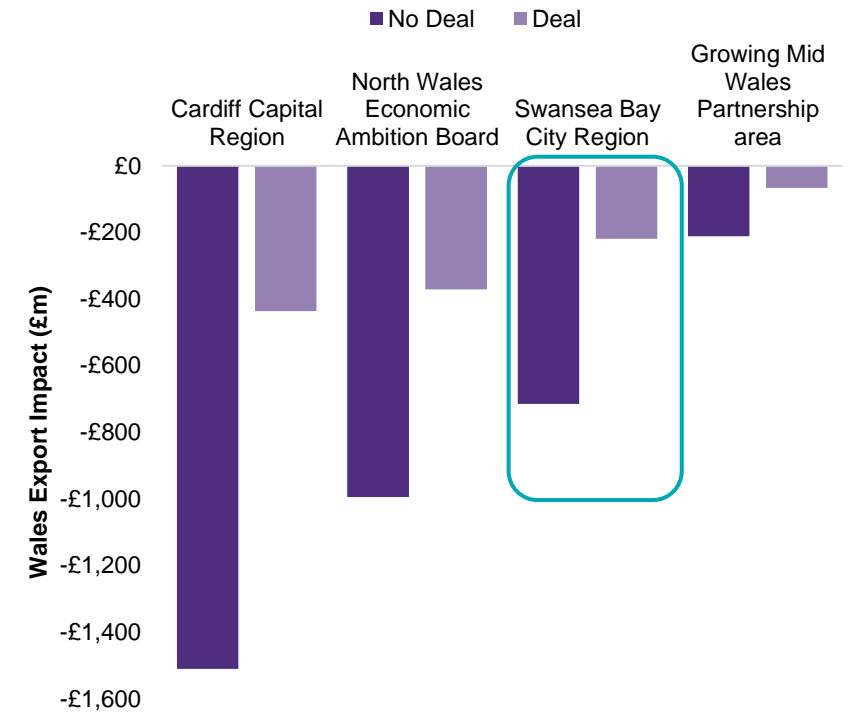
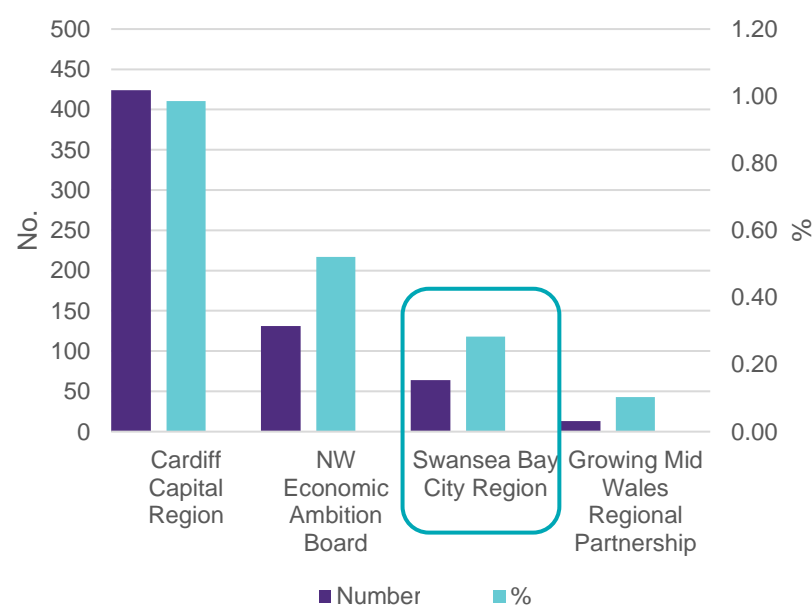
## National Insurance Number (NINo) registrations

47% reduction in EU registrations between 2016 and 2020 across the UK



## Foreign owned businesses

Expressed as a count and proportion of all businesses



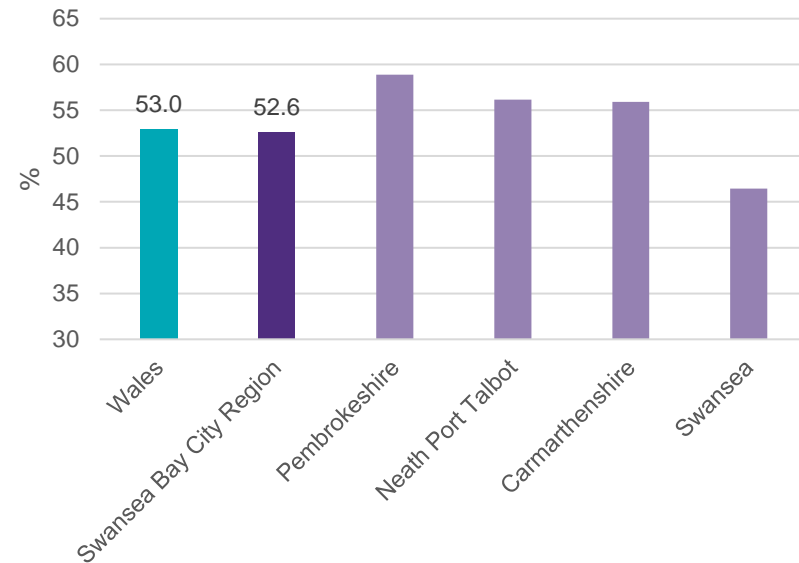
Grant Thornton

An instinct for growth™

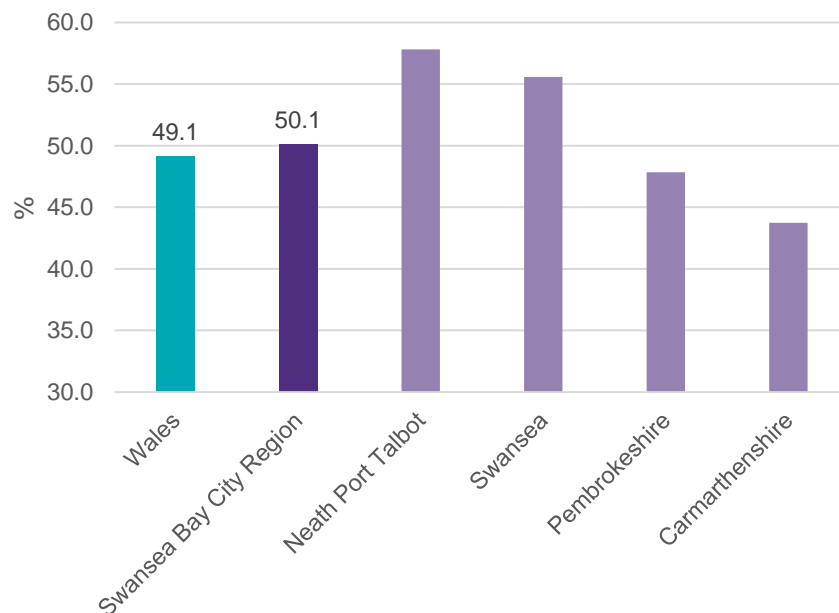


# Swansea Bay City Region. COVID-19

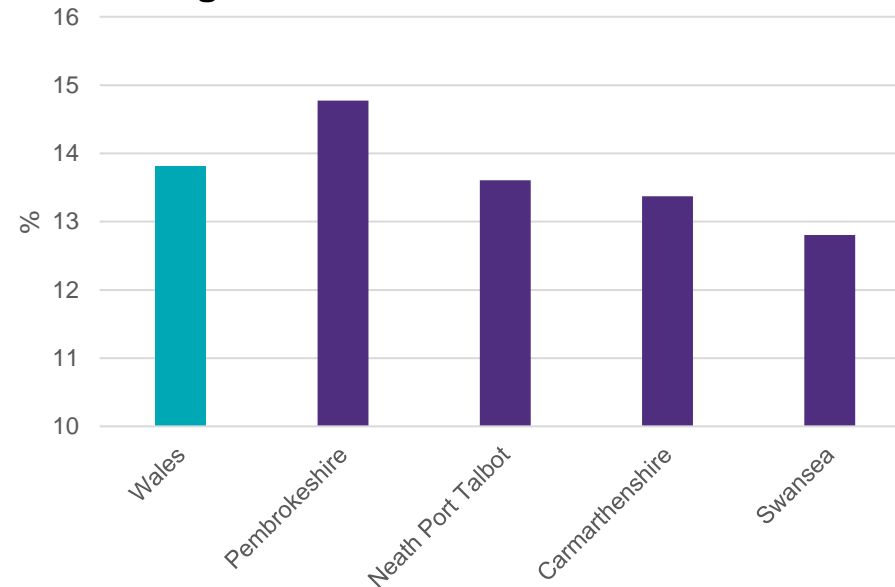
## Percentage of employment in COVID-19 'at risk' sectors



## Percentage of businesses in COVID-19 'at risk' sectors



## Estimated decline in total annual GVA resulting from COVID-19



## Government support take-up rate



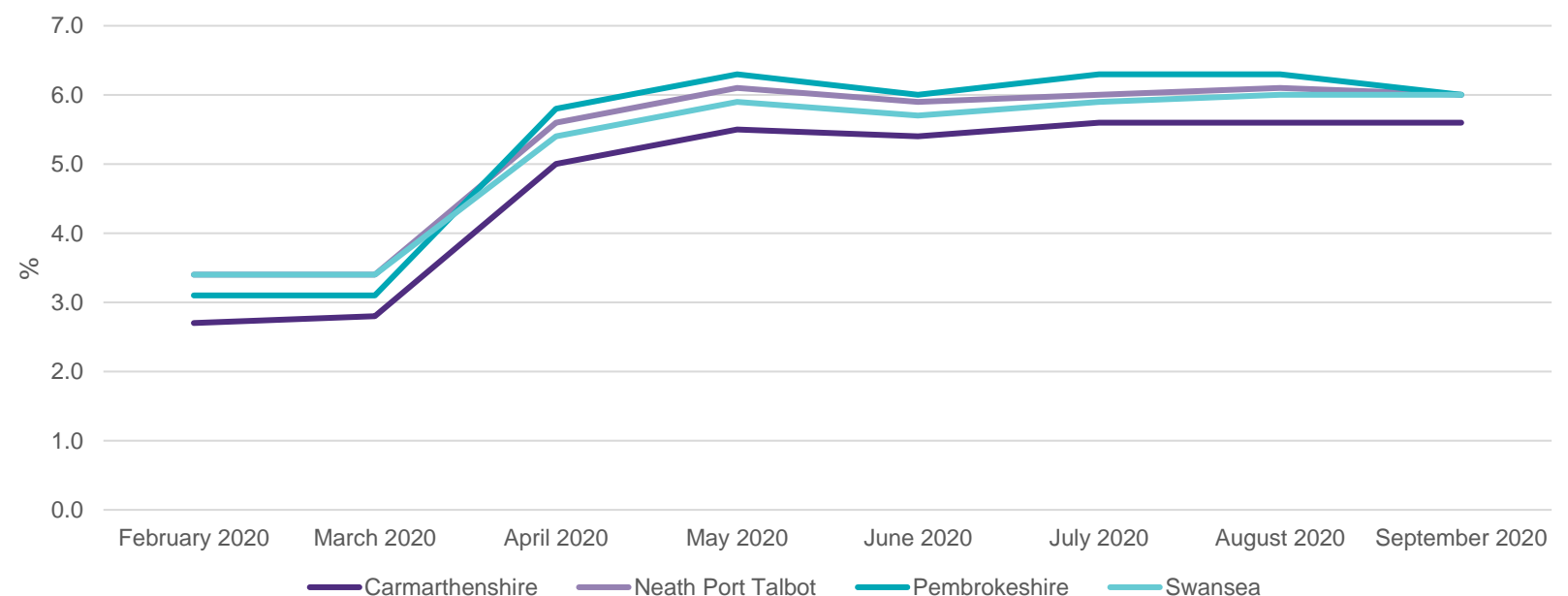
**Coronavirus Job Retention Scheme**  
**Swansea Bay City Region: 30%**  
Wales: 31%  
UK: 32%



**Self-Employment Income Support Scheme**  
**Swansea Bay City Region: 77%**  
Wales: 78%  
UK: 77%

## Claimant rate (Feb 2020 to Sept 2020)

The number of people claiming unemployment related benefits in the UK reached 2.7 million in September, an increase of 1.5 million since lockdown began in March. The rate below is expressed as a proportion of the resident working age population.







# Swansea Bay City Region. Summary

## Key findings

- Compared to the other three regions, Swansea Bay City Region has a high proportion of its population who were born in the EU, at 2.9%, which compares to a Welsh average of 2.6%.
- Within the region, Swansea has the highest proportion of population born in the EU, at 4.1%, whilst the lowest is in Pembrokeshire (1.6%).
- Across the region, vulnerability ranges from average to very high. Neath Port Talbot has the highest score on our Vulnerability Index, with notably low income, high deprivation and low skills.
- By comparison, Pembrokeshire has the lowest levels in the region, reflecting vulnerability levels in the bottom 20% of Welsh authorities.
- The deprivation map shows that the top ten most deprived LSOA's are largely concentrated in Swansea, although the second most deprived LSOA is found in Carmarthenshire.
- The proportional decline in EU NINO registrations between 2016 and 2020 is the second greatest of the regions, reducing by 46.6% (equivalent to 900 less registrations).
- Swansea Bay City Region has above average levels of employment in Motor Trades, Retail and Accommodation and food services which are all identified as 'at risk' sectors in relation to both the EU transition and COVID-19.
- Overall, the proportion of employment in COVID-19 'at risk' sectors is slightly lower than the Welsh average. Although it should be noted that at a local authority level, three of the four areas have levels of employment 'at risk' greater than the Welsh average.
- Of the four local authorities, Pembrokeshire has seen the greatest increase in claimant count rate since the pandemic, although this has started to come down in the last month.



# Data sources

Indicator	Output	Why include?	Source
<b>EU born residents</b>	Bar chart shows proportion of residents that are born in the EU compared to other authorities in the region and the Welsh average.	EU migrants form a crucial part of the economy. In order to understand the potential impacts of changes in migration, it is important to have an overview of what proportion of the current population is made up of EU born residents.	ONS, Population of the UK by country of birth and nationality (Dec 2019)
<b>No qualifications, NVQ 1 only</b>	Factoid showing the proportion of working age residents with no qualifications and the proportion of working age residents qualified to NVQ 1 only.	A study by the Institute of Fiscal Studies found that those with fewer formal qualifications are more likely to be employed in the most exposed industries.	Annual Population Survey (Dec 2019)
<b>Local level deprivation</b>	Thematic map showing the overall Welsh Index of Multiple Deprivation. The top 10 most deprived areas in the region are highlighted in red on the map and listed in the accompanying table.	Deprivation provides an indication of the relative deprivation of small areas. Areas that already have higher levels of deprivation could be more vulnerable to the impacts of Brexit.	Welsh Index of Multiple Deprivation (2019)
<b>Community Vulnerability Index</b>	Spider chart shows how the local authorities with a region perform on individual measures, relative to the national median.	Our 'Community Vulnerability Index' takes into account factors which are most likely to impact on a place's ability to adapt in a post-Brexit world, including unemployment, low skills, low level occupations, no qualifications, income and deprivation. NB: Income has been inversed in the spider chart so that a point towards the outer edge of chart indicates lower income levels.	Annual Population Survey (June 2020, Dec 2019); Survey of Personal Incomes (2018); Welsh Index of Multiple Deprivation (2019);
<b>National Insurance Number (NINo) registrations</b>	Bar chart to see how the number of new registrations has changed between referendum and now.	NINo numbers are often used an indicator for the number of migrants moving into a geographical area for work. This is an important consideration given the contribution that EU workers make to the economy.	NINo registrations to adult overseas nationals entering the UK by Region / Local Authority and world region - registrations year to June 2020, DWP (June 2020)
<b>Employment sectors</b>	Bar chart showing proportional employment in different sectors. Bars are highlighted to show if the sector is recognised as 'at risk' in relation to either Brexit or COVID-19, or both.	Some employment sectors are more vulnerable to the impacts of Brexit and COVID-19, therefore it is important to understand which sectors are most prominent and whether any of these are high risk.	Business Register and Employment Survey (2019)
<b>Foreign Owned businesses</b>	Bar chart showing the total number and proportion of businesses that are foreign owned.	High dependence on foreign owned businesses could pose a risk as there is uncertainty as whether some of these businesses will remain within the UK or relocate.	FAME, Bureau Van Dijk (2019)
<b>GVA per filled job</b>	Bar chart showing GVA per job for each local authority within the region, compared to the Welsh average.	GVA per filled job provides a direct comparison between the level of economic output and the direct labour input of those who produced that output. The level of productivity is useful to consider as it is a current weakness in the UK economy and may be further hindered post-Brexit.	Nominal (smoothed) GVA (B) per filled job (£); Local Authority District (2018)
<b>Trade impacts</b>	Bar charting showing the total Export Annualised Impact in a Deal and No deal scenario by Welsh NUTS 3 Regions (£m), NUTS 3 Regions		HMRC & Grant Thornton Analysis. Note: The data doesn't include the impact on WA BTTA, WA Energy exports & WA Other

# Data sources (cont.)

Indicator	Output	Why include?	Source
<b>Employment in 'at risk' sectors</b>	Bar chart showing percentage of employment in 'at risk' sectors compared to the Welsh average.	The sectoral make-up of areas will have a strong influence on the economic impacts of COVID-19. For example areas with a high proportion of the workforce employed in accommodation and food services will be more heavily impacted than area with high levels of professional and technical workers. .	GT calculation based on: Business Register and Employment Survey (2019)
<b>Businesses in 'at risk' sectors</b>	Bar chart showing percentage of businesses t in 'at risk' sectors compared to the Welsh average.	The sectoral make-up of areas will have a strong influence on the economic impacts of COVID-19. For example areas with a high proportion of the workforce employed in accommodation and food services will be more heavily impacted than area with high levels of professional and technical workers.	GT calculation based on: UK Business counts (2020)
<b>Estimated decline in total annual GVA resulting from COVID-19</b>	Factoid showing estimated percentage reduction in annual GVA under Covid-19 scenario. The modelled GVA data is based on OBR output losses by sector in 2nd quarter of 2020. A higher figure indicates greater vulnerability.	The level of productivity is useful to consider as it is a current weakness in the UK economy and may be further hindered post-Brexit. The economic productivity of sectors will vary between areas and therefore it is important to consider the knock on impacts of COVID-19 on GVA alongside employment risks.	GT calculation based on: ONS, Regional gross value added (balanced) local authority by NUTS 1 region: UKL Wales (2018) and OBR output losses table
<b>Coronavirus Job Retention Scheme (CJRS) take up rate</b>	Factoid showing take up rate relative to Welsh and UK average.	Certain sectors have been more heavily impacted by COVID-19 than others and as a result a high level of employees have had to be put on furlough. This measure therefore gives an indication of the immediate impacts that COVID-19 is having on local areas.	ONS, Coronavirus Job Retention Scheme (CJRS) Statistics: August 2020
<b>Self-Employment Income Support Scheme (SEISS) take up rate</b>	Factoid showing take up rate relative to Welsh and UK average.	Research has shown that self-employed people are more at risk to the economic impacts of COVID-19. This new dataset gives an early indication of the level of self-employed people in an area who are requiring support.	ONS, Self-Employment Income Support Scheme (SEISS) Statistics: August 2020
<b>Claimant count rate</b>	Line chart showing the change in claimant count rate for all local authorities within the region.	Claimant count data is a timely dataset that can be used to see how COVID-19 is impacting unemployment levels in different areas.	Claimant count (Sept 2020)



